

This guide was prepared for you by...

# Bondi Beach Backpackers

0412 509 279 - 35a Hall Street, Bondi Beach NSW 2026



## CAIRNS TO SYDNEY ROAD TRIP

The REEF COAST from CAIRNS to GLADSTONE is the GREAT BARRIER REEF. It has lots of islands. Generally do not swim in the ocean off the mainland. Only swim off island and where safe. Read the signs.

The SHARK COAST from GLADSTONE TO HERVEY BAY. Don't swim in the ocean here at all.

The SURF COAST from NOOSA to SYDNEY great bays, awesome surf beaches, impressive headlands and spectacular lighthouses. Enjoy!!

Have a great trip & drive safe.

- To book *Bondi Beach Backpackers* please call Richard on 0412 509 279.
- We prefer to take bookings over the phone so we can help you with parking, any questions & any requirements you may have
- We have free street parking. Please park out front, check in, drop bags and then park the car.
- We also have discount vouchers for places to eat & drink which you may require after your drive. Please ask at check in.



Surf Coast



Shark Coast



Reef Coast

This guide was prepared for you by...

# Bondi Beach Backpackers

0412 509 279 - 35a Hall Street, Bondi Beach NSW 2026

## CAIRNS TO COOKTOWN TO MISSION BEACH

The trip north from of CAIRNS to PORT DOUGLAS to CAPE TRIBULATION & COOKTOWN is a must!

The drive north to PORT DOUGLAS is lined with pretty views of the CORAL SEA & great beaches. About an hour & twenty minutes drive brings you to PORT DOUGLAS which is a great place with good backpacker hostels, chilled out atmosphere after the hustle bustle of CAIRNS. Here you can dive the reef. Has nice beaches but please read the signs!

Heading north the next spot is CAPE TRIBULATION which is a very chilled out beach destination with DAINTREE NATIONAL PARK right there. Very much "Crocodile Dundee" territory.

Most people turn back at this point but the road is now sealed up to COOKTOWN. A place where Captain Cook had to make urgent repairs to his ship and beached his ship and spent 6 weeks fixing it, hence the name COOKTOWN. Be adventurous and go the extra bit. Well worth it!

From here you can drive back to PORT DOUGLAS or CAIRNS. CAIRNS has tons of life, backpackers hostels, tons of party party!!

CAIRNS has a big airport, big tourism, lots of diving, dive courses, live aboard dive trips. CAIRNS also has 2 islands of its coast called FITZROY ISLAND and GREEN ISLAND, both are worth a visit.

Driving south from CAIRNS you hit BABINDA where you can check out JOSEPHINE FALLS. Really great place for a swim and chill out. Town of INNISFAIL is next and not long after MISSION BEACH.



Port Douglas



Cape Tribulation



Daintree National Park Crocs!



Daintree National Park



Cooktown



Cairns Party Bus



Fitzroy Island



Josephine Falls at Babinda

This guide was prepared for you by...

# Bondi Beach Backpackers

0412 509 279 - 35a Hall Street, Bondi Beach NSW 2026

## MISSION BEACH TO HERVEY BAY & FRASER ISLAND

Heading south don't miss MISSION BEACH which is a great place with a stunning beach and very chilled out. Here you would sky-dive and do white water rafting. Great backpackers hostels here too.

Heading south again the next town of merit is TOWNSVILLE which has little to offer itself, however lying just a few kilometres of the coast of TOWNSVILLE is MAGNETIC ISLAND which is awesome.

You catch a ferry to the island. Here there are several cool bays with great beaches and dive courses too. Stay a few days and explore. It worth a few days. Its very popular with backpackers and we very much recommend it.

Next along the coast heading south is BOWEN, not much here except fruit, lots of fruit!

Next along the coast heading south is AIRLIE BEACH & THE WHITSUNDAY ISLANDS. You must stop here. It would be a crime to miss it.

AIRLIE BEACH is the gateway to the WHITSUNDAY ISLANDS. Most people take 1, 2 or 3 day/night trips on sailing yachts which is the best way to explore. All the yachts do snorkelling, some will do diving too and almost all will hit WHITEHAVEN BEACH a very cool white sand beach with swimming and view points to explore.

You can also get day trips via ferry to several island resorts such as HAMILTON ISLAND. All the island are WOW!!

A very long and boring drive is next, sorry! Going south through MACKAY, ROCKHAMPTON & GLADSTONE all of which have little to offer.

However, the TOWN OF 1770 and AGNES WATERS is well worth a stop for a few days & has a cool backpacker hostel to stay at. Its unique in that it has a surf break and a fabulous beach.

Next heading south is BUNDABERG, not much here except fruit, lots of fruit!

Next heading south is HERVEY BAY and FRASER ISLAND. don't miss it!!



Mission Beach



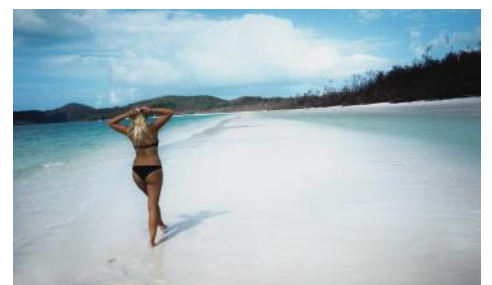
Skydive Mission Beach



White Water Rafting at Mission Beach



Magnetic Island



Whitehaven Beach at Whitsunday Islands



Airlie Beach



Sailing the Whitsundays



Snorkelling & Diving at the Whitsundays

This guide was prepared for you by...

# Bondi Beach Backpackers

0412 509 279 - 35a Hall Street, Bondi Beach NSW 2026

## FRASER ISLAND TO GOLD COAST/SURFERS PARADISE

HERVEY BAY is the town closest to FRASER ISLAND and lots of 1, 2 and 3 day tours go from here. Lots of backpacker hostels with whale watching is very popular.

1 day trips give you a sense of FRASER ISLAND however if you can do a 3 day 2 night 4WD tour as a group, it's the best way. You get to drive on the beach, swim in LAKE MACKENZIE, see kangaroos and dingos in the wild and camp out under the stars. Its an amazing few days you will never forget.

Do not swim in the ocean anywhere on FRASER ISLAND. Creeks and lakes YES!, Ocean NO!

Next is RAINBOW BEACH, a cool spot where you can also do FRASER ISLAND tours and also where you can ride horses on the beach.

NOOSA is next, an awesome place & you should stay here a few days. There's lots to do here. The KOALA WALK goes around the southern headland and takes you through to SUNSHINE BEACH which has amazing beaches & beautiful scenery. Catch the bus back to NOOSA.

NOOSA also offers great backpackers hostels where you can also organise surfing, surf lessons, walking and FRASER ISLAND tours.

The SUNSHINE COAST is next. From NOOSA take the SUNSHINE COAST HIGHWAY through SUNSHINE, COOLOM, MAROOCHYDORE, MOOLOOLABAH and CALOUNDRA. This is an amazing coastline and has loads to do and well worth stopping and staying for a few days.

Next is BRISBANE. If you like City life then stop but cities make cars & vans pay lots of money so keep on Going if you don't want to pay for parking.

After the BRISBANE comes THE GOLD COAST. This is a tourist mecca with lots of high rise tourist apartments, long surf beaches that go on for ever and the home to some iconic places such as SURFERS PARADISE, BROADBEACH & BURLEIGH HEADS all good surf spots. Lots of theme parks such as WET & WILD and MOVIE WORLD etc. The Q1 building for stunning views. Enjoy!



4WD on Fraser Island



Lake Mackenzie on Fraser Island



Whale Watching at Hervey Bay



Ride Horses on the beach at Rainbow



Noosa Beach



Brisbane



Sunshine Coast



Sunshine Beach

This guide was prepared for you by...

# Bondi Beach Backpackers

0412 509 279 - 35a Hall Street, Bondi Beach NSW 2026

## GOLD COAST/SURFERS PARADISE TO COFFS HARBOUR

Heading south you cross the border into NEW SOUTH WALES.

After crossing the TWEED RIVER you take a right onto TWEED VALLEY WAY heading towards MOUNT WARNING.

MOUNT WARNING is the most easterly peak and as such gets the first sunlight each day. Its also an amazing experience to walk up to the top. It takes minimum 5 hours so give your self time. The scramble at the top is unforgettable.

Next stop is BYRON BAY. To get here from MOUNT WARNING you have to head back the way you came but heading for SOUTH MURWILLUMBAH going through CRABBES CREAK and joins the PACIFIC HIGHWAY which takes you south to BYRON BAY.

Lots to do in BYRON BAY such as surfing, surf lessons, kayaking, diving and skydiving. It has a great vibe so stay a few days and enjoy it. There are tours to NIMBIN from here too. You simply must walk up to THE BYRON BAY LIGHTHOUSE via WATEGOES BEACH. There are many backpackers hostels to choose from.

Staying on coast road heading south you come to LENNOX HEAD, a famous surf spot. It quickly becomes BALLINA, not much here!

The PACIFIC HIGHWAY now gets boring going inland to the town of GRAFTON (nothing here, keep going!) and back to the coast to YAMBA which is a good place to stop as it has good surf beaches.

As the PACIFIC HIGHWAY comes back to the coast you get to the surf beaches at ARRAWARRA. Good place to stop for a break or stay and surf.

You are now on the COFFS COAST which has some cool surf spots at MOONEY BEACH and SAPPHIRE BEACH before heading into COFFS HARBOUR.



Mount Warning



Kayak with dolphins at Byron Bay



Byron Bay Main Beach



Byron Bay Lighthouse



Kayak with dolphins at Byron Bay



Surf/Surf lessons Byron Bay



Arrawarra



Yamba

This guide was prepared for you by...

# Bondi Beach Backpackers

0412 509 279 - 35a Hall Street, Bondi Beach NSW 2026

## COFFS HARBOUR TO NEWCASTLE

COFFS HARBOUR has lots to do. You can stay here in one of many backpackers hostels. You can dive, surf, visit wildlife parks and of course the BIG BANANA (best to Google it)

Next up is a choice. You can drive south from COFFS HARBOUR on the PACIFIC HIGHWAY or take the WATERFALL WAY which we recommend if you have time and want something special.

To take the WATERFALL WAY take inland road from COFFS HARBOUR to CORAMBA then south west to ULONG to BROOKLANA to DORRIGO and DORRIGO NATIONAL PARK before turning south east towards the coast going through THORA and BELLINGEN and back to the PACIFIC HIGHWAY at RALEIGH

Next heading south is a famous surf beach at VALLA BEACH before hitting NUMBUCCA HEADS and CRESENT HEAD both are cool stops with cool surf beaches and headlands.

Next town is PORT MACQUARIE which is a good place to stop and eat, check out the impressive beaches & stay. Many hostels here.

Just after crossing the MANNING RIVER is a left turn off to FORSTER TUNCURRY after which the road follows to coasts to GREEN POINT and TIONA and ELIZABETH BEACH and BLUEYS BEACH.

You must visit SEAL ROCKS where you will find SUGARLOAF POINT LIGHTHOUSE. This one is simply the best of all. The views are awesome. A short walk will reveal some impressive caves, beaches and the light house. Fabulous views. Don't miss it!!

You join PACIFIC HIGHWAY at BULEHDELAH. The next stop is PORT STEPHENS which is an amazing place about 40 minutes off the highway & has some amazing beach & bays and is famous for dolphins and is well worth staying the night. There is lots of exploring to be done here at ANNA BAY and SALAMANDER BAY. Look out for dolphins, there are plenty.

Drive back to the PACIFIC HIGHWAY and head south to NEWCASTLE which has some impressive surf beaches and several backpacker hostels too.



Coffs Harbour



Dangar Falls on Waterfall Way



Waterfall Way



Beach at Port Macquarie



Sugarloaf Point Lighthouse at Seal Rocks



Newcastle Beaches



Port Stephens



Dolphins at Port Stephens

This guide was prepared for you by...

# Bondi Beach Backpackers

0412 509 279 - 35a Hall Street, Bondi Beach NSW 2026

## NEWCASTLE TO BONDI BEACH

From NEWCASTLE you have a choice. Blast it to Sydney in 2 hours or take the tourist drives on and off the PACIFIC HIGHWAY

Heading south from NEWCASTLE take the coast road to SWANSEA and BELMONT and CATHERINE HILL BAY around LAKE MUNMORAH to BUDGEWOI. NORAH HEAD LIGHTHOUSE is worth a visit

Follow road south to THE ENTRANCE and on to BATEAU BAY which is a good surf spot. FORESTERS BEACH is next & is also a good surf spot

Next town is TERRIGAL which has some amazing surf beaches close by well worth a visit. These would be AVOCA BEACH and COPACABANA BEACH and MACMASTERS BEACH. Get back on to the PACIFIC HIGHWAY at GOSFORD and drive in towards SYDNEY

At PYMBLE turn left onto MONA VALE ROAD and follow to MONA VALE where you turn left onto Barrenjoey road. This takes you up to PALM BEACH where you will find the "HOME & AWAY" TV show beach and the awesome BARRENJOEY LIGHTHOUSE. Take the 30 minute walk to the top. Well worth it!

Drive south through AVALON, BILGOLA, NEWPORT & MONA VALE and onto NARRABEEN, COLLAROY, CURL CURL, DEE WHY and MANLY BEACH. All are famous surf spots. Drive through MANLY heading for NORTH HEAD lookout. The views of SYDNEY HARBOUR with SYDNEY in the distance are unbeatable.

Go over the SYDNEY HARBOUR BRIDGE. The Bridge is spectacular!! Follow signs to BONDI JUNCTION & BONDI BEACH. Our address is 35a Hall Street, Bondi Beach

**I very much hope this guide was useful to you.**

**Have a great trip, drive safe and if this was useful to you please write to us at [info@bondibeachbackpackers.com.au](mailto:info@bondibeachbackpackers.com.au), we would love to hear from you, hear about your awesome trip, inform us of any changes and/or updates that need to be made so we can help others too!**

**Thank you. Richard & the *Bondi Beach Backpackers* Team**



Norah Head Lighthouse



Central Coast Beaches



Bateau Bay on the Central Coast



Copacabana Beach on the Central Coast



Terrigal Beach on the Central Coast



View from North Head of Sydney Har-



View from Palm Beach Lighthouse



Avoca Beach on Central Coast

This guide was prepared for you by...

# Bondi Beach Backpackers

0412 509 279 - 35a Hall Street, Bondi Beach NSW 2026

## DRIVING THE COAST

### Signs

Read the signs, they may save your life. Especially those about NOT to go in the water!!

### Rivers

Most coastal rivers in NSW and VICTORIA are fast, wide and kill quick plus mean things live in them like sharks.

### Take Breaks

Aussie roads are long, boring & you need to take breaks!

### Kangaroos

Will smash your car to pieces and the crash that follows smashes you and your mates to pieces so at sun up and sun down be very aware!

### Parking

You have to park the direction traffic faces. If you see a parking spot available turn around & park in the same direction as others. Don't be the wrong way round or face a fine that will make you dry.

Many towns make you park with back of car to the kerb whilst other towns want you to park with the front of your car to the kerb. Read the signs or get a ticket.

Have a great trip, drive safe & **Thank you!!**



Read signs that save



I'm drowning



Take a Break!!



Kangaroo v Car. Kangaroo will win!!



Park Same Direction as Others